

# zendu*it*

## ZenduTimecard

Intelligent Time Tracking for  
Faster Decision Making and  
Increased Efficiency



## OVERVIEW

Traditional time tracking solutions leverage paper-based timesheets to record employee work hours, breaks, and location visits. These timesheets require manual inputs and verification to record and analyze data, which is time-consuming and error-prone.

**ZenduTimeCard** is an intelligent time tracking solution which helps organizations automate their time tracking and reporting processes while making it easier for them to manage, collect and analyze critical employee data such as standard hours, breaks, overtime, and location visits - anytime, anywhere.



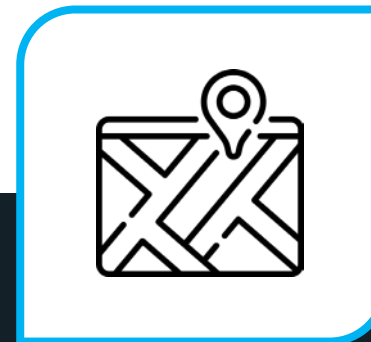
### A MOBILE APP FOR EMPLOYEES THAT'S EASY TO USE

Employees can log in and out of work using our time clock app on their smartphone



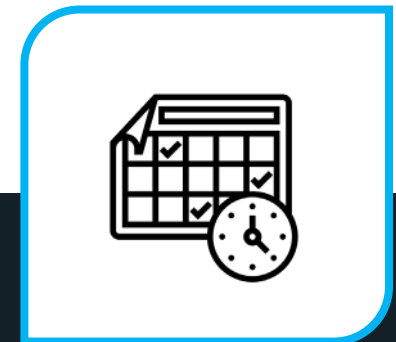
### MONITOR REMOTE WORKERS

Track remote employees and their work assignments to ensure productivity and compliance.



### AUTOMATIC LOCATION DETECTION

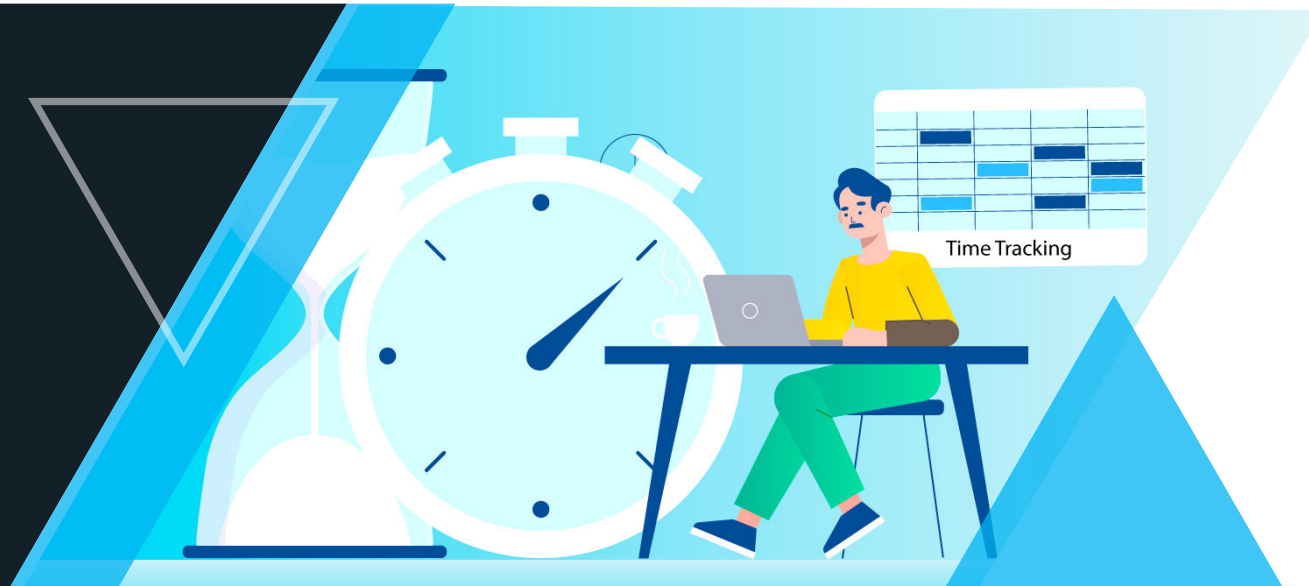
Employees are automatically located and "clocked in" upon arriving at work.



### MANAGE CUSTOM SCHEDULES

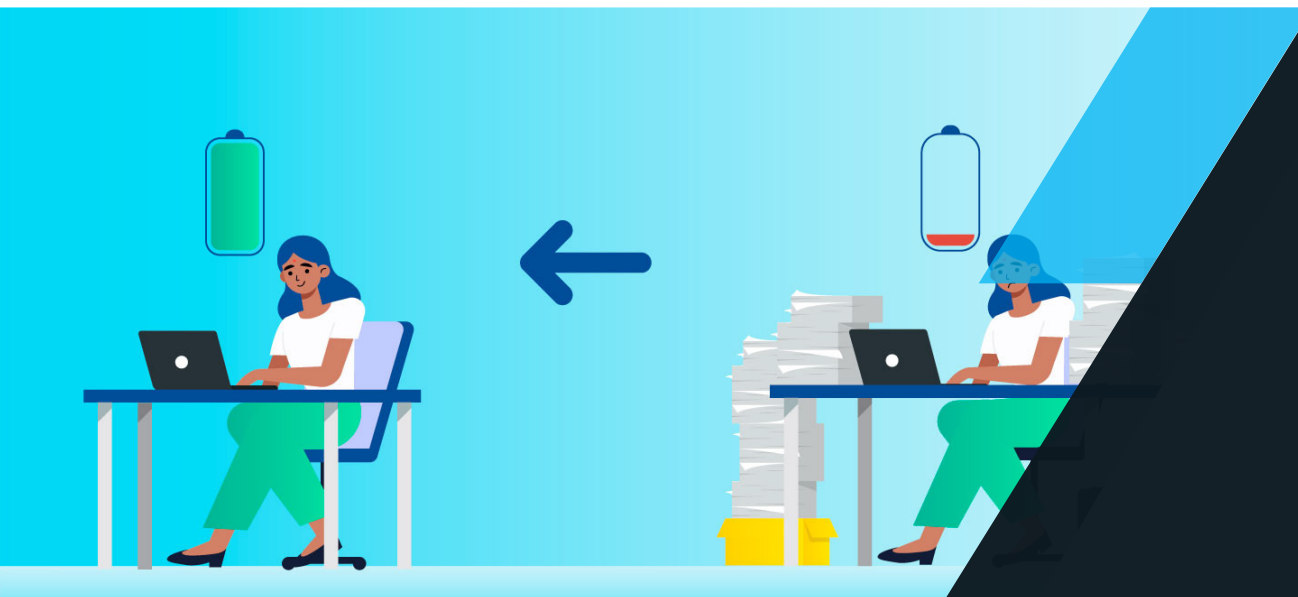
Seamlessly detects employee overtime hours and adjusts their schedule and payroll.

## FEATURE HIGHLIGHTS



### Easy time tracking

**ZenduTimeCard** features a simple yet powerful interface, providing you with real-time data such as total working hours, time and duration of breaks and overtime hours, all of which can be managed on any web-based device. It enables managers to visualize reports and learn how employees spend their working time, creating better estimates, streamlining their workflow, and empowering them to complete projects on time.



### Eliminate paper timesheets and manual entries

Organizations can now enter timesheets digitally, enabling them to review, verify, input, and analyze employee timesheets with the click of a button.

**ZenduTimeCard** also helps organizations eliminate manual, paper-based timesheet entries, which reduces the risk of human error.

## FEATURE HIGHLIGHTS



## Transform Data into Decisions

**ZenduTimeCard** empowers organizations to transform their timesheet data into a number of useful metrics, including costs, utilization, billing, and pay. It enables them to monitor the productivity of their employees and compare it with the operational costs incurred. ZenduTimeCard turns metrics and time into enterprise assets.



## Accurate Timesheet Tracking

This solution helps organizations verify, cleanse, analyze, review, and apply the right edits to resolve any discrepancies in the data and ensure it is ready for processing. It also allows organizations to apply accurate workflows based on their time information and provides a built-in compliance and rules engine to adhere to key business policies.

## PRODUCT HIGHLIGHTS



### Easy integration with existing infrastructure

**ZenduTimeCard** is created with wide-ranging compatibility to seamlessly connect with existing hardware infrastructure for low-cost installation. The solution is easily scalable to match the dynamic needs of operations without limiting fleet productivity.

## DYNAMIC INTEGRATION

**zenduCAM**



● Easily view road and driver-facing footage in real-time through ZenduCAM desktop or mobile application

● ZenduCAM rewind feature to investigate the past complaints or search for a specific event within a recorded footage

● ZenduCAM predefined rules to trigger and analyze critical events

● ZenduCAM unlimited cloud storage to record uninterrupted events from dash camera